



CONCRETE COATINGS *Acrylic Finishes*

Decorative Finishes For Concrete

- ◆ Driveways
- ◆ Patios
- ◆ Pool Decks
- ◆ Porches
- ◆ Interiors
- ◆ Logos

Specialized Products

Concrete Coatings Inc. acrylic overlays are a specialized formulation of acrylic resins and cements designed specifically to restore or beautify concrete. The resulting finish is a durable, yet flexible coating sure to enhance and strengthen any concrete application.

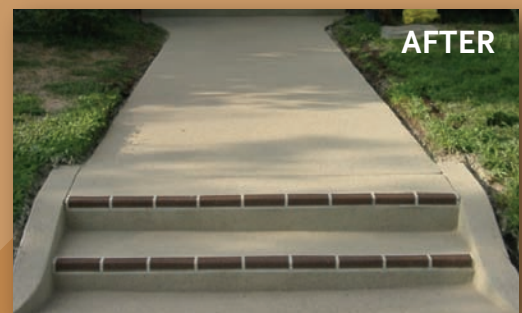
Unlimited Applications

Our acrylic products are available in numerous patterns, colors, textures, and designs.

They can be applied to most concrete surfaces; old or new, vertical or horizontal, residential, industrial or commercial.



BEFORE



AFTER

**CONCRETE COATINGS** INCTM
restore • re-invent • reviveTM



CONCRETE COATINGS *Acrylic Finishes*

Decorative Finishes For Concrete

Features

- ◆ Salt & Alkali Resistant
- ◆ Oil, Gas and Grease Resistant
- ◆ Outstanding flexural properties
- ◆ UV & Stain Resistant
- ◆ Freeze/Thaw Resistant

CONCRETE COATINGS *Tips*

Coverage

*Read all of the instructions before installation.

One "mix" consists of: 50-lb. bag of G-100 series grout, 4 1/2 to 5 quarts of Duraset™ 1000-1001 acrylic modifier, 3/4 to 1 cup C-series colorant.

One "mix" typically covers about 200 square feet skimmed or sprayed application; (avg. 100 square feet finished application) Five gallons of Duraset™ typically makes four "mixes". Acrylic sealer averages 150 square feet per gallon. Each quart of C-Series colorant will color approximately four mixes. *Coverage varies with temperature and substrate conditions, texture type and individual application techniques.

Equipment and Supplies

Hopper Gun, Steel Pool trowel, Continuous Run Compressor, Knee Pads, Double Row Cup Grinding Wheel, Diamond Crack Chaser, Diamond Blades, 4" and/or 9" Grinders, 1/2" Heavy Duty Drill, Pressure Washer, Rubber Spray Shields, Mixing paddle, Masking paper and maskers.

Concrete Preparation

Eliminate all dirt, debris and contaminants. Repair cracks as necessary. Grind all high spots and non-uniform areas. Round off any square edges. Re-cut all existing expansion and control joints another 1/4" deep. Remove paint, glue and sealers. Rebuild, re-slope and repair using Fast Patch™ mortar. The surface must be cleaned and etched using one part Muriatic acid to four parts water. Pressure wash the surface with a minimum of 3000 psi and 3-4 gallons of water per minute.

Mix: Mix 4.5-5 quarts of Duraset™ Modifier per bag of grout. Add modifier then grout in an empty 5-gallon bucket. Mix vigorously with a mixing paddle attached to a 1/2" drill. Make sure mix is even, consistent and free of lumps. Add 3/4 cup of desired colorant to mix and blend again with mixing paddle until color is consistent. (Certain colors require more than 3/4 cups of colorant). The mixture should be the consistency of cake batter. If it is not, adjust the mix by adding more grout or modifier to get the correct consistency. There should be a slightly grainy texture.

Skim Coat: Pour about 1-gallon of the mixture from the 5-gallon bucket onto the concrete surface. Due to the porous nature of concrete, priming the surface during skim coat application using a plastic weed sprayer is recommended. Use a mixture of modifier thinned with no more than 25% water. This keeps the material wet and workable. Apply evenly and smoothly using a squeegee or pool trowel until the entire surface is covered. A thick application is not necessary or recommended. Apply only to the thickness of a business card for most applications. Prime edges generously to allow material to run down the edge radius, particularly on stairs. Use a trowel to remove excess material from control joints. Note: In extreme heat, it is acceptable to mist the surface with water to reduce temperature of concrete.

After this coat has dried, clean all joints using a small diamond blade and use a rubbing brick to smooth out imperfections. Sweep and blow the surface clean with a leaf blower prior to tape application. Apply pattern tape or paper stencil on the dried skim coat to create desired look. Mask areas as necessary to prevent over-spray.

Spray Coat: For the spray coat, reduce modifier to 4 1/2 - 4 3/4 quarts per bag and mix thoroughly. A slightly grainy texture should be noticeable.

Add mixture to hopper gun. When spraying, consistency is more important than coverage. Consistent application gives the appearance of spraying 100% coverage. Overlap each stroke 1/3-1/2 each time. Spray edges and radius first then vertical surfaces such as steps. Lower air pressure at higher air flow is preferred. Stay about 16" above the surface. Ensure all tape lines are covered consistently.

Highlight: Highlights may include three or more colors. We recommend a dark and light color. Spray in short bursts with a fast side to side motion at chest height. Pull the trigger back fully on each burst. Spray all vertical areas then all horizontal areas. Spray colors from darkest to lightest.

After the spray has dried completely, scrape the surface lightly with a 16" floor scraper to remove extreme high spots. DO NOT push down on the scraper. Scrape at 45 degree angles to pattern lines. Lightly clean tool joints again with a diamond blade. Remove all pattern tape, masking and stencils. Sweep and blow the surface thoroughly prior to sealer application.

Sealing

Concrete Coatings Inc.™ SuperSeal™ 2000 is most commonly used for sealing acrylic coatings. You may also use Concrete Coatings Inc.™ Gem-Kote™, Saf-T-Seal™, SuperGlaze™ VOC, SuperGlaze™ 3600, SuperSeal™ 20WB, SuperGlaze™ WBU and UV Shield™. Consult technical support for specific recommendations and application instructions.

Apply sealer using a 3/8"-1/2" nap solvent resistant roller. Use a liberal amount of sealer on the first coat for maximum penetration. (150-square feet per gallon) Spread evenly to avoid roller marks. Allow 12 hours between coats to achieve build instead of saturation. Avoid puddles since they can discolor over time. Three coats of sealer are recommended for vehicular areas and two coats for pedestrian areas. Do not allow foot traffic for at least 24 hours, and vehicular traffic for 7 days.

Important Notes

Acrylic cement overlays are developed for cementitious areas. Movement in concrete, settling and tree roots may damage the coating. Care should be taken as with any other decorative surface.

Warranty

This product is intended for use by licensed contractors and installers, knowledgeable and trained in the use of these products. It is warranted to be of uniform quality, within manufacturing tolerances. The manufacturer has no control over the use of this product, therefore, no warranty, expressed or implied, is or can be made either as to the affects or as results of such use. Product proved to be defective will be replaced. The end user shall be responsible for determining products suitability and assumes all risks and liability. There are no other warranties by Concrete Coatings Inc. of any nature whatsoever, expressed or implied, including any warranty of merchantability or fitness for a particular purpose in connection with this product. Concrete Coatings Inc. shall not be liable for damages of any sort, including remote or consequential damages resulting from any claimed breach of any warranty, whether expressed or implied, from any other cause whatsoever. Concrete Coatings Inc. will not be responsible for use of this product in a manner to infringe on any patent held by others.

Cautions: KEEP OUT OF REACH OF CHILDREN

Before using or handling, read the Material Safety Data Sheet and Warranty. DO NOT TAKE INTERNALLY. Avoid contact with skin and eyes. Use only with adequate ventilation and use of respirator when levels are above application limits.





CONCRETE COATINGS *Acrylic Finishes*

Decorative Finishes For Concrete

- ◆ Impact resistance, compression and strength are almost twice that of regular concrete.
- ◆ Can be applied from feather edge to 2+ inches thick.
- ◆ Provides a permanent seal against water and moisture contamination and erosion.
- ◆ Accelerated cure can be accomplished by using FastSet 1001 Series Modifier.



The Ideal Solution

Acrylic products are perfect whether you are resurfacing that old patio or just want to add a finishing touch to a driveway, walkway or pooldeck.

Exterior and Interior Applications

Concrete Coatings Inc. acrylic overlays are popular on interior or exterior surfaces.

These products can be sprayed or hand troweled depending on the desired look.





CONCRETE COATINGS *C-100 Liquid Colorants*

For acrylic cementitious systems, micro-toppings and stampable overlays

Available in numerous patterns, colors, textures and designs. Finishings that are durable, yet flexible and will enhance any project.



C-106 Natural Gray



C-118 Coral



C-107 Platinum Gray



C-124 Sandy Beige



C-120 Wheat



C-110 Light Oxford Gray



C-117 Salmon



C-126 Mocha



C-101 Antique White



C-127 Noble Gray



C-122 Sahara



C-113 Desert Beige



C-125 Putty



C-116 Bright Red



C-108 Dark Gray



C-103 Burnt Sienna



C-112 Brown



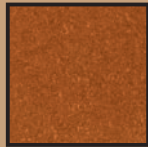
C-119 Almond



C-115 Bright Blue



C-109 Oxford Gray



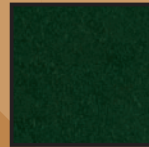
C-123 Terra



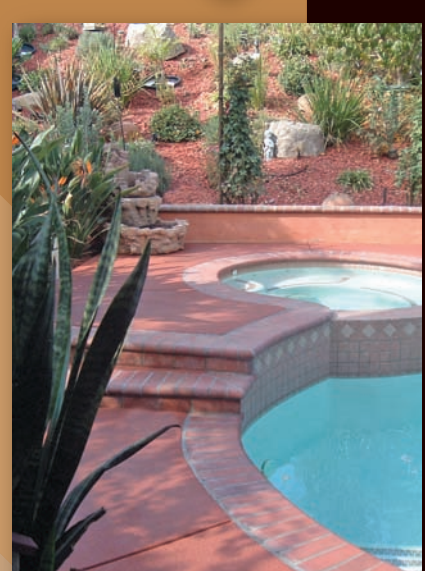
C-111 Chocolate



C-102 Sand



C-114 Forest Green



This color chart is a representation only and does not guarantee that the final color will be an exact match. The colors produced will rely heavily on skill, practice, and experimentation. Application methods and age of the concrete will result in different tones. Even in a controlled environment, cements, aggregates, water content and curing methods will contribute to different results. Concrete Coatings Inc. recommends that any changes be made to the acrylic cement overlay prior to sealing.



CONCRETE COATINGS INC.™
restore • re-invent • revive™

For technical assistance please call

800-443-2871

www.ConcreteCoatingsInc.com